

TO: Safety Contacts
Rodeo Participants

FROM: NCAMES Safety & Training Committee

DATE: December 9, 2009

SUBJECT: NCAMES 13th Annual Lineman's Rodeo

Attached is a package of materials for the NCAMES 13th Annual Lineman's Rodeo to be held in Newton, NC at the American Legion Fairgrounds on May 19, 2010.

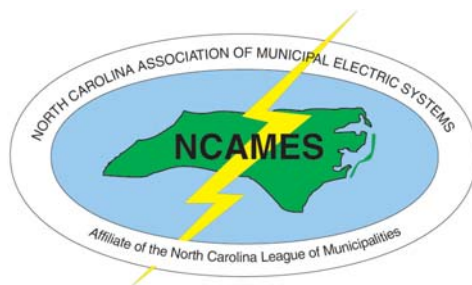
Please return your entry form(s) and release and waiver agreement (completed by your supervisor) no later than April 15, 2010 to make sure we have everything ready for all participants. Also, in addition to these forms for the rodeo, please be sure and register for the NCAMES Conference through your supervisor. The conference registration is coordinated by Gail Boggs, Secretary/Treasurer for NCAMES. Any questions related to the conference other than the Lineman's Rodeo should be directed to Gail at (910) 223-4516 or gail.boggs@faypwc.com. Gail will be mailing out conference registration packages early next year.

First, second, and third place Journeyman, Journeyman Alternate, first and second place Apprentice winners will receive a \$150 cash prize and an all-expense paid trip to Nashville TN to compete in the 2011 APPA Lineman's Rodeo. The winners will compete as a team representing NCAMES. This prize is presented by the NCAMES Board of Directors. Please make every effort possible to attend the APPA rodeo if you qualify for this trip.

First, second, and third place Journeyman, Journeyman Alternate and Apprentice winners will also be recognized by trophies and/or plaques.

The fastest time without deductions for each event will be recognized by plaques. The Mutual Aid event prize is to be determined.

For information on Rodeo events, see www.ncames.com and to download packet. Any questions or concerns may be directed to: NCAMES Safety & Training Committee at www.ncames.com. All questions will be answered by the NCAMES Safety & Training Committee and posted on this website. Note: You will need to login to the website to ask questions. (The user name and the password have been emailed to you.)



NCAMES 13th ANNUAL LINEMAN'S RODEO

The NCAMES 13th Annual Lineman's Rodeo will be held in Newton, North Carolina at the American Legion Fairgrounds. The awards presentation will be the day of the rodeo at the NCAMES Social. **We can add or change participants' names up to April 15.**

Deadline for entry is April 15, 2010. No entries will be accepted after this date.

The release form must be received by April 15 in order to participate in the Rodeo.

Contestants must compete in all events. Failure to complete all events will result in disqualification from the competition. Only one groundman will be allowed per lineman.

*****All Events will be judged as Energized Real World Conditions. *****

Each contestant must provide their own:

- Climbers
- Belt
- Safety strap
- Hard hat
- 100% fall arrest (fall arrest is required; if a contestant does not have fall arrest they may borrow one from NCAMES)
- Approved safety glasses with side shields
- 100% cotton or flame-retardant long-sleeved shirt
- Hand tools
- Leather gloves
- Knife (no razor knife)
- 20 kV rubber gloves and protectors
- Hot sticks, etc.

Please make sure that your tools are clearly marked with your name for identification.

Attached are the following forms and guidelines:

- 1. Rodeo agenda**
- 2. Entry release form**
- 3. Common questions and answers – discussion Board information**
- 4. Eligibility requirements**
- 5. Judging guidelines**
- 6. Event descriptions**
- 7. Entry forms for participants**

2010 NCAMES 13th ANNUAL LINEMAN'S RODEO

AGENDA

Monday, May 17

10:00 a.m. Sign-in Golf Tournament and Clay Shoot

Tuesday, May 18

8:00 a.m.-4:00 p.m. Pre-Rodeo Registration / Vendor Day and Technical Sessions

4:30 p.m. Competitors Q&A at Convention Center

Wednesday May 19

7:00 a.m. – 8:00 a.m. Judges' Meeting and Breakfast (Location TBD)
(This is a mandatory meeting for all Judges)

8:00 a.m. – 9:00 a.m. Apprentice Test at the Convention Center
Test starts promptly at 8 a.m.
Late competitors will be disqualified.
All apprentices must attend.

9:00 a.m. – Noon 13th Annual Lineman's Rodeo Competition Begins

Noon – 1:00 p.m. Lunch for Competitors

1:00 p.m. – 4:00 p.m. Rodeo Resumes

5:00 p.m. – 7:00 p.m. Rodeo Awards Presentation and Social at Convention Center

***** Due to time issues please be prompt to all start times *****

QUESTIONS AND ANSWERS

All Competitors shall comply with APPA and OSHA Standards

1. Who is qualified to enter?

a. Journeyman Event

Any qualified Journeyman Lineman, Line Technician, Crew Foreman, or equivalent classification **employed by a NCAMES member city within the State of North Carolina**. The Journeyman Lineman must be a permanent full-time employee of the city represented.

b. Apprentice Event

A person is considered an Apprentice if four years or less in line work. This definition will be used as the criteria for eligibility in entering the Line workers' Rodeo. ***An apprentice line worker who has been an apprentice for more than four years cannot compete in the apprentice event and must compete on teams with Journeymen.***

2. Will any events be in aerial buckets?

No

3. Will a liability release form have to be signed prior to competing?

Yes

4. What are contestants scored on?

- Safety procedures
- Work practices
- Equipment handling
- Timely completion of the event

5. Who are the Judges?

Members of the NCAMES Safety & Training Committee, operating utility supervisors and past participants will serve as Judges. We welcome and encourage Judges from all participating utilities. Judges will not be allowed to judge competitors from their own utility system.

6. What will cause immediate disqualification?

- Any mistake which, under working conditions, would cause serious injury or death.
- Arguing with a Judge or exhibiting improper or discourteous conduct toward a Judge or another competitor.
- Failure to complete all events.
- Tools found altered at competition.

7. What size is the Primary Conductor?

All Primary will be #2 ACSR Conductor

- 8. Do the competitors have to furnish any tools?**
- **Yes**, climbers, belt, safety strap, approved city-issued hard hat, 100% fall arrest, (fall arrest is required; if contestant does not have fall arrest they may borrow one from ElectriCities/NCAMES), safety glasses with side shields, 100% cotton or flame-retardant long-sleeved shirt, hand tools, knife, hotline tools and cover, 20 kV rubber gloves and protectors must be furnished by **each competitor**. Be sure to mark all of your tools for easy identification. Competitors are solely responsible for their own tools. All tools will be inspected prior to use.
 - All climbing gear must conform to current ANSI and OSHA standards.
- 9. What tools will be provided?**
- ElectriCities/NCAMES will provide hand lines for Hurtman rescue, Extendo Stick for Apprentice Event, and fall arrest if needed.
- 10. Can custom (homemade) tools be used?**
- No altered tools will be allowed.
- 11. Can competitors ask the Event Judge questions?**
- Yes, before the event begins but not during the event. The Judge may be asked to clarify any questions before the event begins. It is the competitor's responsibility to ask questions. You will have a maximum of five (5) minutes to ask questions and lay out your tools.
- 12. Will videotape footage be allowed to settle judging disputes?**
- No. The decisions of the Chief Judge are final.
- 13. If I disagree with a deduction, can I contest the call?**
- Yes. Mike Byrd of ElectriCities will act as the Chief Judge. Any disputes that cannot be resolved by the Event Judge may be brought to the Chief Judge. The competitor may request that the Event Judge notify the Chief Judge of the dispute before he/she leaves the event.
- ***Be advised that any dispute that is not overturned by the Chief Judge will result in a 10-point penalty *****
- 14. Can I use Velcro straps on my climber pads?**
- Yes, however, they must be used as manufactured. No modifications, such as cutting the Velcro shorter, are allowed.
- 15. Will regular prescription glasses be allowed to be worn by competitors during the competition?**
- No. Only approved safety glasses or approved prescription safety glasses with side shields will be accepted for the competition.
- 16. Will Battery, Hydraulic or Power Tools be allowed?**
- No

17. Will hard line cover be allowed?

Yes

18. Will full fall arrest be required?

Yes, and you may attach fall arrest to pole during your five (5) minute set-up time.

Infraction Definitions

The following are definitions for the infractions listed on the score sheets. These are the most common infractions.

General Infractions – 2-Point Infractions

- **PPE MUST BE WORN AT ALL TIMES WHILE INSIDE RODEO AREA**
- ***Failure to cover neutral, secondary or primary properly***
All potentially energized conductors must be fully covered with protective cover provided when within reach, fall, or slip of energized conductor.
- ***Safety strap and fall arrest infraction***
Safety strap must be in control at all times. Both snaps of safety must be hooked on the D-ring while climbing the pole. The safety strap may be carried on the shoulder; however, both snaps must still be in D-ring. If the safety strap slides off the shoulder, the contestant will receive a deduction. After using secondary fall arrest to cross obstacle, primary fall arrest must be reattached to the pole before continuing to climb.
- ***Improper hand line operation***
The lines of the hand line must not be twisted while raising or lowering tools or material. All tools and material must be raised and lowered on the hand line. The hand line may be hung above the neutral before cover-up only if there are no secondary conductors to reach over, and the uncovered neutral is not touched by any part of the hand line or hand without rubber gloves.
- ***Dropping tools or materials from pole or bucket truck***
Climbers cannot drop tools or materials from the pole.
- ***Misuse of tools, or the use of the wrong tool***
Tools must be used for their intended purpose and not altered from manufacturers' specifications.
- ***Extended body contact with covered neutral***
The body cannot have more than brush contact with the covered neutral.
- ***Failure to maintain proper clearance from energized conductors or parts***
Journeyman must maintain proper clearance from exposed energized primary conductors or parts with all parts of the body except the rubber-gloved hand. This would include any un-insulated tools attached to the energized primary conductor.

Proper clearance is defined as within reach fall of exposed energized conductors.

- ***Cutout or slip on pole***
Cutout or slip is defined as one or more gaffs out of the pole and sliding on the surface of the pole out of control.
- ***Failure to wear hard hat properly at all times (not backward)***
Hard hats must be worn with visor over face and not over the neck.
Cowboy hard hats are not approved.
- ***Failure to wear long-sleeved shirt, sleeves down and buttoned***
Long-sleeved shirts are required. If shirt has buttons on the sleeve, they must be buttoned. Sleeves cannot be pushed or rolled up.
- ***Dropping or losing hard hat***
Hard hats must be worn at all times while inside the event area. This applies to all team members or apprentices.
- ***Hanging tools or materials on structure, conductor or safety strap***
Tools or materials can only be hung on the hand line or approved devices.
- ***Other:*** _____
Infractions that have a low occurrence and listed on the other infraction list of definitions will be shown here with a brief description.

10-Point Infractions

- ***Contact with energized conductor***
Contact with uncovered primary or neutral conductor with any body part except rubber gloved hands.
- ***Losing control or dropping conductor or tools***
 - Losing control of a conductor is defined as being unable to hold in position without touching the pole, hardware, other conductors or dropping completely.
 - Dropping of a tool is defined as a tool coming out of hand and falling free.
- ***Walking in climbers***
- ***Gaff Guards not on climbers while inside rodeo area***
- ***Disputes that are taken to Chief Judge***
Any dispute that is taken to the Chief Judge will result in a 10-point penalty if the dispute is not overturned.

JOURNEYMAN EVENT
DOUBLE DEAD-END BELL CHANGE OUT
MEAN TIME: 20 MINUTES
DROP DEAD TIME: 25 MINUTES

This event will consist of changing out the load side bell. Line is to be considered energized at 4 kV and APPA minimum approach distances must be maintained.

1. Journeyman will be allowed a five (5) minute set-up time before starting the event to ask questions and lay out tools.
2. Time starts at judges' signal.
3. The Journeyman must wear rubber gloves ground to ground.
4. Both sides of neutral and clevis must be covered.
5. Proper Primary cover-up required.
6. Line is to be isolated, tested and grounded for potential back feed
 - Simulate testing by verbally calling out "Testing for Hot" and "Testing for Dead"
7. All materials and tools must be sent up and down with a hand line.
8. Time stops after both feet of the lineman are on the ground.
9. **Source side conductor and bell must be covered.**
10. Primary Conductor will be #2ACSR conductor.

**JOURNEYMAN EVENT
DOUBLE DEAD-END BELL CHANGE OUT
JUDGING GUIDELINES**

Name _____ City _____

ANY VIOLATION OF STANDARD SAFETY RULES IS AN AUTOMATIC 10-POINT DEDUCTION.

INFRACTIONS THAT CAUSE A 2-POINT DEDUCTION

- Failure to cover neutral or primary properly _____
- Failure to wear rubber gloves ground to ground _____
- Climbing with safety strap in hand or dragging free _____
- Safety Strap falling off of shoulder _____
- Dropping tools or materials from pole _____
- Misuse of tools or use of the wrong tools _____
- Extended body contact with covered neutral _____
- Failure to perform hot stick work while positioned below neutral _____
- Failure to maintain proper clearance from energized conductors or parts _____
- Cutout or slip on pole _____
- Failure to wear a hard hat properly at all times (not on backward) _____
- Failure to wear long-sleeved shirt; sleeves rolled down and buttoned _____
- Dropping or losing hard hat _____
- Hanging tools or materials on structure, conductor, or safety strap _____
- Exceeding mean time of 20 minutes for this event _____
- Hand line operation while on competitor's belt _____
- Other _____

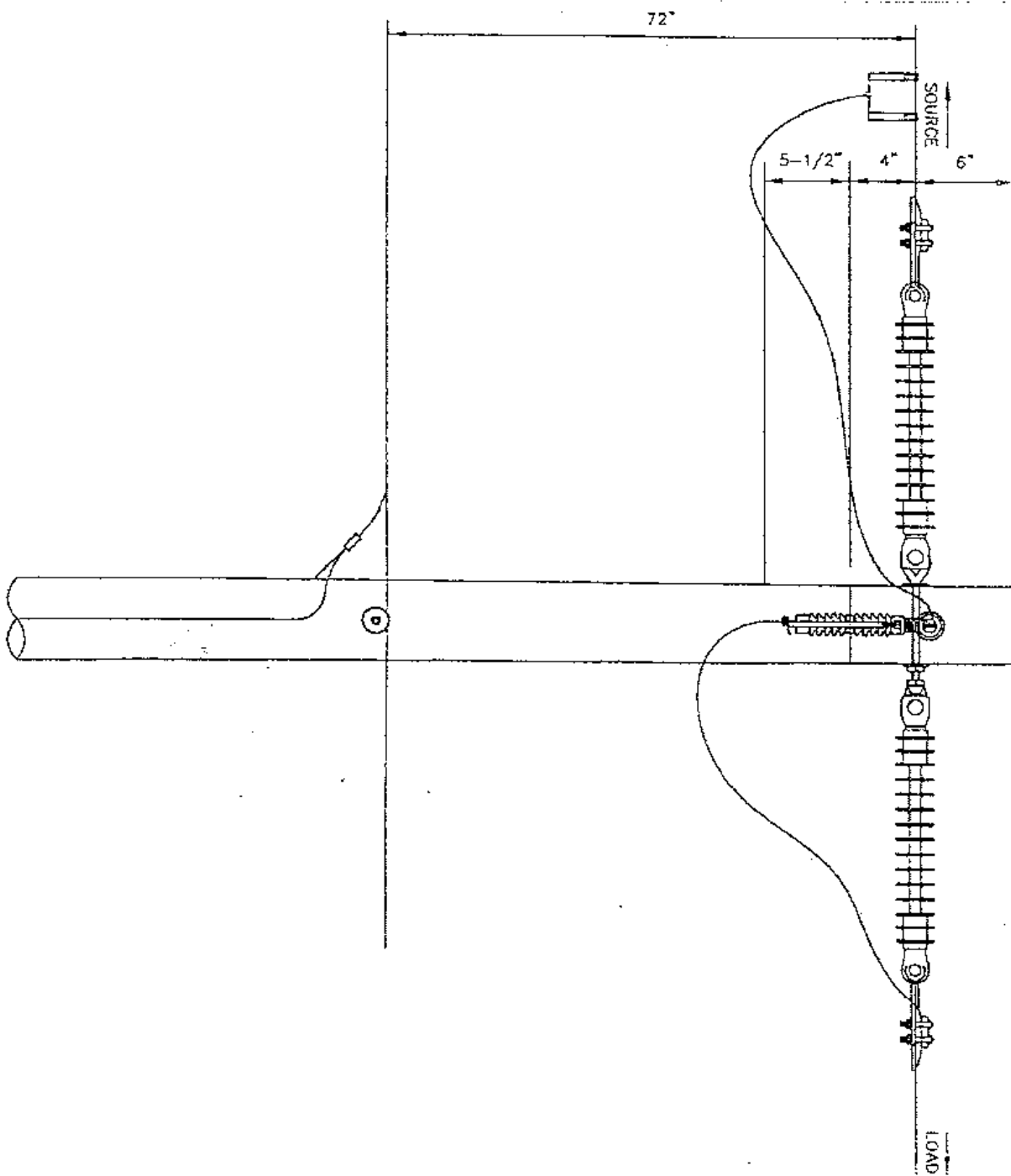
INFRACTIONS THAT CAUSE A 10-POINT DEDUCTION

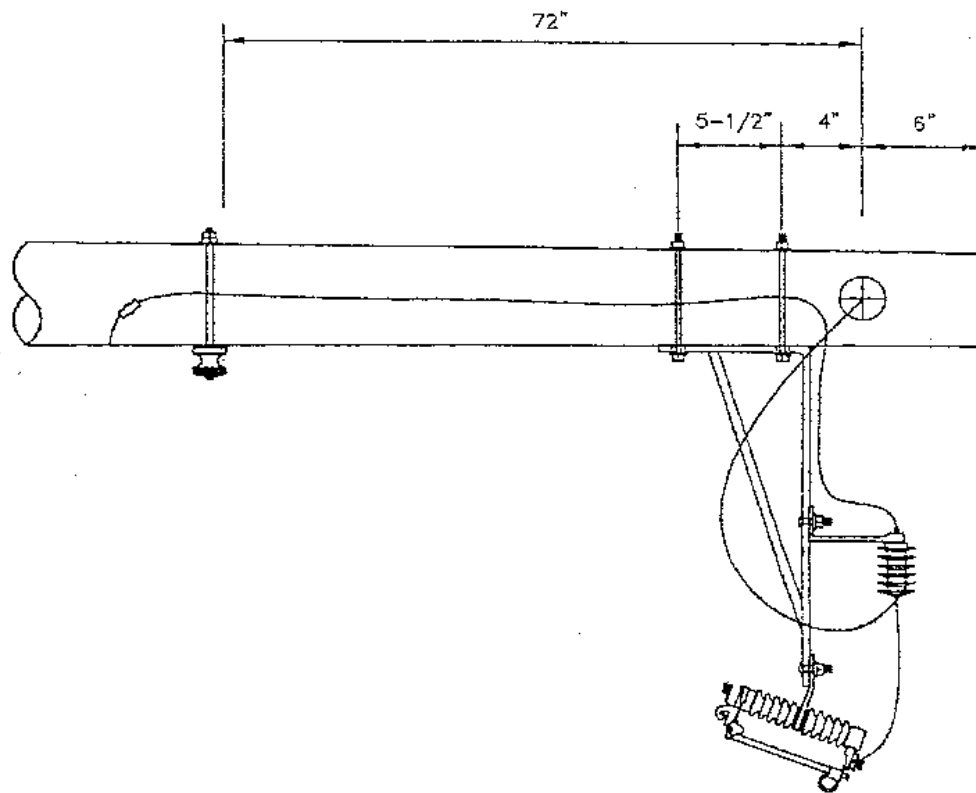
- Accidental brush contact with bare phase or neutral _____
- Hot-dogging/free falling or in Judges' opinion competitor used excess speed in ascending or descending pole (one gaff must be in pole at all times) _____
- Arguing with Judges/bad conduct _____
- Failure to wear approved safety glasses with side shields _____
- Failure to isolate, test, and ground _____
- Exceeding drop dead time of 25 minutes _____
- Dispute with Chief Judge that is not overturned _____
- Other _____

***After 30 minutes, competitors will be disqualified, and no time will be allowed for this event.**

Total Deductions: _____ **Time: Min:** _____ **Sec:** _____
Total Score = 100 _____ **Total Deductions** _____

Judge's Name: _____





No LA used for this Event as shown in this picture.

JOURNEYMAN EVENT
POLE TOP PIN & INSULATOR CHANGE OUT
MEAN TIME: 20 MINUTES
DROP DEAD TIME: 25 MINUTES

This event will consist of changing out a pole top pin and insulator on a simulated 4 kV single-phase line.

1. Journeyman will be allowed a five (5) minute set-up time before starting the event to ask questions and lay out tools.
2. Time starts at Judges' signal.
3. The Journeyman must wear rubber gloves ground to ground.
4. All material and tools must be sent up and down with a hand line.
5. Lineman will be judged on proper cover-up and minimum approach distance.
6. Time stops after both feet of lineman are on the ground.

**JOURNEYMAN EVENT
POLE TOP PIN & INSULATOR CHANGE OUT
JUDGING GUIDELINES**

Name _____ City _____

ANY VIOLATION OF STANDARD SAFETY RULES IS AN AUTOMATIC 10-POINT DEDUCTION.

INFRACTIONS THAT CAUSE A 2-POINT DEDUCTION

- Failure to cover neutral or primary properly _____
- Failure to wear rubber gloves ground to ground _____
- Climbing with safety strap in hand or dragging free _____
- Safety Strap falling off Shoulder _____
- Dropping tools or materials from pole _____
- Misuse of tools or use of the wrong tools _____
- Extended body contact with covered neutral _____
- Improper installation of perform tie _____
- Failure to maintain proper clearance from energized conductors or parts _____
- Cutout and / or failure to maintain control _____
- Failure to wear a hard hat properly at all times (not on backward) _____
- Failure to wear long-sleeved shirt; sleeves rolled down and buttoned _____
- Dropping or losing hard hat _____
- Hanging tools or materials on structure, conductor, or safety strap _____
- Exceeding mean time of 15 minutes for this event _____
- Hand line operation while on competitor's belt _____
- Other _____

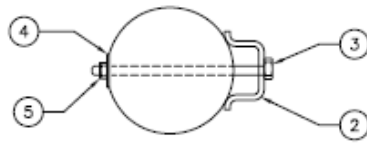
INFRACTIONS THAT CAUSE A 10-POINT DEDUCTION

- Accidental brush contact with bare phase or neutral _____
- Hot-dogging/free falling or in Judges' opinion competitor used excess speed ascending or descending pole (one gaff must be in pole at all times) _____
- Arguing with judges/Bad conduct _____
- Failure to wear approved safety glasses with side shields _____
- Failure to isolate, test, and ground _____
- Exceeding drop dead time of 20 minutes _____
- Dispute with Chief Judge that is not overturned _____
- Other _____

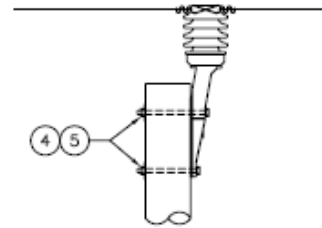
***After 30 minutes, competitors will be disqualified, and no time will be allowed for this event.**

Total Deductions: _____ **Time: Min:** _____ **Sec:** _____
Total Score = 100 _____ **Total Deductions** _____

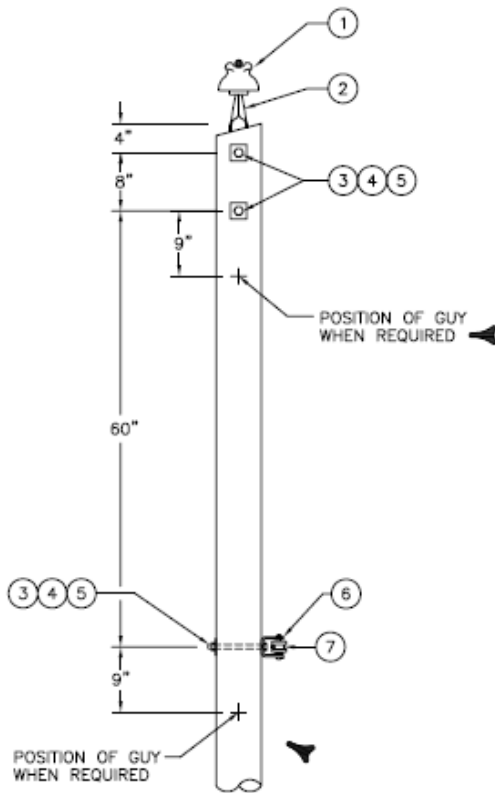
Judge's Name: _____



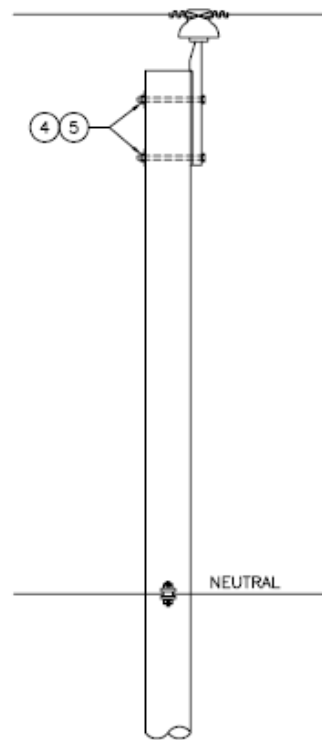
POLE TOP PIN ASSEMBLY



ALTERNATE



FRONT VIEW



SIDE VIEW

NO.	INVENTORY NO.	QUANTITY	DESCRIPTION
1	-	1	INSULATOR, PIN TYPE
2	-	1	POLE TOP PIN, 20"
3	-	3	BOLT, MACHINE, 5/8" x REQUIRED LENGTH
4	-	3	WASHER, SQUARE, 2-1/4" X 2-1/4" WITH 11/16" HOLE
5	-	3	WASHER, LOCK, 5/8"
6	-	1	BRACKET, RIGID CLEVIS
7	-	1	INSULATOR, SPOOL

NOTES:

1. GROUNDS ARE TO STOP AT THE NEUTRAL POSITION EXCEPT TO RISE TO A LIGHTNING ARRESTER OR TRANSFORMER.
2. ALL GUYS MUST CONTAIN A GUY STRAIN INSULATOR SUFFICIENT TO PROVIDE TWO FEET OF AIR CLEARANCE.

3			
2			
1	1/2/08	CADD GRAPHICS	OST
0	1/27/05	CADD GRAPHICS	OST
REVISED	BY	APPR.	

**PRIMARY, SINGLE-PHASE
SINGLE SUPPORT, 15KV**

ELECTRICITIES

SCALE: 1/2"=1'-0"
DWG. A1EC



***LAPP Insulator
ANSI 56-1***

This type of Insulator (shown above) will be used on all primary construction.

JOURNEYMAN / APPRENTICE EVENT
HURTMAN RESCUE
SIMULATED HOT ON A 40-FOOT POLE

The purpose of this event is to simulate the rescue of a lineman that has been injured while climbing on a pole that has energized wires and/or equipment on it. Competitors must follow all appropriate safety rules and common industry standards to complete the rescue. The mean time for this event is four (4) minutes.

1. Time starts at the whistle with the competitor standing an arm's length from the pole. The lineman's belt and hooks will be lying on the ground beside him. Rubber gloves will be inside the glove bag, with the cuffs down, on the ground with the tools and are required from ground to ground.
2. **When facing the pole from the cross arm side, the hand line will be hung on the right side.** The hurtman will be hung in the center of the pole on the cross arm side, with both ends of the safety strap through the braces. This will simulate an injury to a right-handed man. **A minimum of one complete wrap around the cross arm with the hand line is required before lowering the victim.**
3. The mannequin should be tied under the arms with three half hitches (**eye splice should not be used as part of hitches**). **The half hitch is the only acceptable knot.**
4. The sheave shall be dropped in the wood chips at the base of the pole. **The lineman must call "Headache" loudly when the sheave is dropped.**
5. A Bashlin belt 57-N will be used on the mannequin. The lineman must cut the Bashlin 57-A insert. Cutting the belt in the wrong place is a 10-point deduction.
6. The mannequin shall be lowered to the ground smoothly, without contacting the pole. The mannequin must not hit the ground hard.
7. **Time stops when the mannequin is on the ground, the rope is slack and competitor has both feet on the ground.**
8. Competitors may still be assessed point deductions until they have removed their climbing gear and the Event Judge has declared the event over.
9. Hand lines will be furnished by Electricities/NCAMES. Competitors must use hand lines provided.
10. Exceeding the mean time of 4 minutes to complete the event will result in a 2-point deduction.
11. Judges will evaluate the rope knot by placing a piece of 4" PVC between the mannequin and the rope. A properly tied knot will touch the PVC pipe while lying on the mannequin's chest.
12. Mannequin's feet must be within designated area when lowered to the ground.
13. Gaff guards must be on climbers when transporting hooks to and from pole.

**JOURNEYMAN / APPRENTICE EVENT
HURTMAN RESCUE
JUDGING GUIDELINES**

Name: _____ City: _____

ANY VIOLATION OF STANDARD SAFETY RULES IS AN AUTOMATIC 10-POINT DEDUCTION

Infractions That Cause a 2-Point Deduction

- Failure to wear rubber gloves from ground to ground _____
- Dropping tools or materials from the pole (each occurrence) _____
- Cutout or slip on the pole _____
- Failure to wear hard hat properly at all times (not backward) _____
- Failure to wear long-sleeve; shirt sleeves rolled down and buttoned _____
- Dropping or losing hard hat _____
- Failure to control descent of mannequin _____
- Allowing the mannequin to contact the pole during descent _____
- Failure to use one complete loop around cross arm _____
- Failure to use three half hitches when tying rope around mannequin arms _____
- Eye splice should not be used as part of the half hitches _____
- Safety Strap falling off shoulder _____
- Failure to have both ends of safety strap in "D-rings" while climbing _____
- Mannequin not lowered in designated area _____
- Twisted hand line operation _____
- Failure to call "Headache" when dropping sheave _____
- Failure to drop sheave in wood chips _____
- Rubber gloves not in glove bag when not in use _____
- Exceeding mean time for the event - 4 minutes _____
- Other _____

Infractions That Cause a 10-Point Deduction

- Hot-dogging/free falling or in Judges' opinion competitor used excess speed ascending or descending pole (one gaff must be in pole at all times) _____
- Arguing with judges/improper conduct _____
- Contact with insulator _____
- Cutting belt in wrong place _____
- Mannequin hitting ground too hard _____
- Walking in climbers _____
- Failure to wear approved safety glasses with side shields _____
- Dispute with Chief Judge that is not overturned _____
- Other _____

Total Deductions: _____ **Time: Min:** _____ **Sec:** _____
Total Score = 100 _____ **Total Deductions** _____

Judge's Name: _____

APPRENTICE EVENT
OBSTACLE COURSE
MEAN TIME: 20 MINUTES
DROP DEAD TIME: 25 MINUTES

The competitor will climb a 40-foot pole equipped with a 100w HPS light on a 4' arm and two cross arms. The competitor will replace the 100w HPS bulb and photocontrol. The competitor will move the top arm 90 degrees to the next pre-drilled hole and remount the arm and braces. The competitor may begin the event at the top arm or the light.

The light will be mounted at 22 ft. The second arm-mounted 6 ft. higher at 28 ft. and mounted on the second arm will be a 100 amp 15kv fused switch mounted on an "L" bracket. The top cross arm will be mounted at 33 ft. consisting of only a cross arm and braces.

After the competitor has replaced the bulb and photocontrol and negotiated the cross-arm portion of the event, from the ground, he shall use an extendo stick to open the fused switch, remove the barrel and bring the barrel down to the ground. After retracting extendo stick and touching the barrel the competitor will reinstall the barrel and close the switch. The event timing ends when the 100-amp switch is closed. The competitor will continue to be judged until the extendo stick is fully retracted and placed completely on the tarp.

Construction Details:

Pole: 40 class 4 penta treated

Cross arms: 8 ft. standard dimension penta treated with heavy-duty wood braces.

Switch: 100-amp 15kv load break switch, mounted on an "L" bracket.

Extension stick: Stick will be provided

Light: 100w HPS light on a 4' arm

1. The apprentice will be allowed a five (5) minute set-up time before starting the event.
2. Event timing begins when the competitor's first climber hook contacts the pole.
3. Event timing ends when the 100-amp switch is closed.
4. Competitor may begin the device transfers at the top arm first or the light first.
5. Extendo stick will be furnished.
6. All nuts must be installed with square washers for 5/8 hardware or round washers for 5/16 hardware.
7. The extendo stick shall be fully retracted and placed on the tarp.
8. All nuts will be "snugged" using a crescent wrench, lineman's wrench or socket attached to ratchet.
9. Leather gloves are required for the duration of the event and during preparation and cleanup.
10. When the competitor leaves the pole he must remove pole climbers before picking up the extendo stick. It is not necessary to cover gaffs at this time

**APPRENTICE EVENT
OBSTACLE COURSE
JUDGING GUIDELINES**

Name _____ City _____

ANY VIOLATION OF STANDARD SAFETY RULES IS AN AUTOMATIC 10-POINT DEDUCTION

INFRACTIONS THAT CAUSE A 2-POINT DEDUCTION

- Failure to call "Coming Hot" before closing fuse _____
- Dropping tools or hardware (fuse barrel, nuts, bolts etc.) _____
- Stick finger coming out of fuse ring while opening or closing switch _____
- Standing or resting a foot on cross arm (cross arm may not be used as step) _____
- Failure to wear a hard hat properly at all times (not backward) _____
- Failure to wear long-sleeved shirt; sleeves rolled down and buttoned _____
- Dropping or losing hard hat _____
- Exceeding mean time of 20 minutes for this event _____
- Misuse, abuse or using the wrong tools for the job _____
- Hanging tools or materials on structure, conductor or belt _____
- Using any part of the cross arm, braces or equipment as a hand hold _____
- Other _____

INFRACTIONS THAT CAUSE A 10-POINT DEDUCTION

- Hot-dogging/free falling or in Judges' Opinion competitor used excess speed ascending or descending pole (one gaff must be in pole at all times) _____
- Arguing with Judges / Bad conduct _____
- Failure to wear approved safety glasses with side shields _____
- Failure to wear leather gloves ground-to-ground _____
- Exceeding drop dead time of 25 minutes _____
- Dispute with Chief Judge that is not overturned _____
- Giving up on Event _____
- Other _____

***After 25 minutes, competitor's time will be disqualified. No time will be allowed for this event.**

Total Deductions: _____ **Time: Min:** _____ **Sec:** _____
Total Score = 100 _____ **Total Deductions** _____

Judge's Name: _____



APPRENTICE EVENT
WRITTEN TEST
TIME: 30 MINUTES

1. **Test starts promptly at 8 a.m.; late competitors will be disqualified**
2. This will be a written test compiled of 50 questions.
3. The questions will come from the latest editions of the APPA Safety Manual and Lineman Career Development Program.
4. The questions will be multiple choices.
5. All Apprentices will take the test together before Rodeo begins at designated area.
6. All questions will count two (2) points each.

MUTUAL AID TEAM EVENT
DOWN SINGLE-PHASE LINE & NEUTRAL
MEAN TIME: 20 MINUTES
DROP DEAD TIME: 25 MINUTES

This event will consist of getting a single-phase line and neutral back up. The line will be cut two ft. from the dead-end shoes. The competitor will strip out the cut tails from the dead-end shoes. Upon doing this, the competitor will have an automatic sleeve and a length of wire to put the line back up. Line is to be considered de-energized and grounded. All competitors are encouraged to participate. **The teams will be drawn at the question and answer session.** This event is a bonus event and will run time permitting.

1. Competitor will be allowed a five (5) minute set-up time before starting the event to ask questions and lay out tools.
2. Time starts at Judges' signal.
3. The linemen must wear leather gloves ground to ground.
4. Hand line must be used.
5. Time stops after both feet of lineman are on the ground.

**MUTUAL AID EVENT
DOWN SINGLE-PHASE LINE & NEUTRAL
JUDGING GUIDELINES**

Name _____ City _____

**ANY VIOLATION OF STANDARD SAFETY RULES IS AN AUTOMATIC
10-POINT DEDUCTION**

INFRACTIONS THAT CAUSE A 2-POINT DEDUCTION

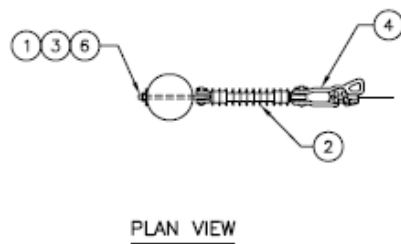
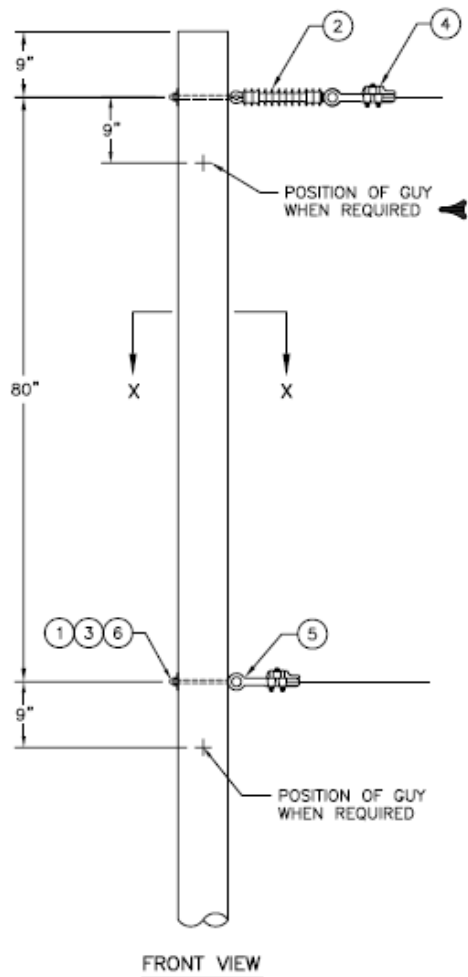
- Failure to wear leather gloves ground to ground _____
- Climbing with safety strap in hand or dragging free _____
- Dropping tools or materials from pole _____
- Misuse of tools or use of the wrong tools _____
- Cutout and / or failure to maintain control _____
- Failure to wear a hard hat properly at all times (not backward) _____
- Failure to wear long-sleeved shirt; sleeves rolled down and buttoned _____
- Dropping or losing hard hat _____
- Hanging tools or materials on structure, conductor, or safety strap _____
- Exceeding mean time of 20 minutes for this event _____
- Hand line operation while on competitor's belt _____
- Other _____

INFRACTIONS THAT CAUSE A 10-POINT DEDUCTION

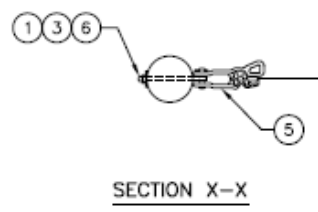
- Hot-dogging/free falling or in Judges' opinion competitor used excess speed ascending or descending pole (one gaff must be in pole at all times) _____
- Arguing with Judges/Bad conduct _____
- Failure to wear approved safety glasses with side shields _____
- Losing control or dropping conductor _____
- Exceeding drop dead time of 25 minutes _____
- Other _____

Total Deductions: _____ **Time: Min:** _____ **Sec:** _____
Total Score = 100 _____ **Total Deductions** _____

Judge's Name: _____



PLAN VIEW



SECTION X-X

NO.	INVENTORY NO.	QUANTITY	DESCRIPTION
1	-	2	WASHER, SQUARE, 2-1/4" X 2-1/4" WITH 11/16" HOLE
2	-	1	POLYMER DEADEND, 15KV
3	-	2	BOLT, OVAL EYE, 5/8" X REQUIRED LENGTH
4	-	1	DEADEND ASSEMBLY, PRIMARY
5	-	1	DEADEND ASSEMBLY, NEUTRAL
6	-	2	WASHER, LOCK, 5/8"

NOTES:

1. GROUNDS ARE TO STOP AT THE NEUTRAL POSITION EXCEPT TO RISE TO A LIGHTNING ARRESTER OR TRANSFORMER.
2. ALL GUYS MUST CONTAIN A GUY STRAIN INSULATOR SUFFICIENT TO PROVIDE TWO FEET OF AIR CLEARANCE.

3			
2			
1	1/2/08	CAD GRAPHICS	OST
0	1/27/08	CAD GRAPHICS	OST
REVISED	BY	APPR.	

**PRIMARY, SINGLE-PHASE
DEADEND STRUCTURE, 15KV**

ELECTRICITIES

SCALE: 1/2"=1'-0"
DWG. A5EC

**JOURNEYMAN ENTRY FORM
NCAMES ANNUAL LINEMAN'S RODEO**

JOURNEYMAN				
Name:				
Utility/Company:				
Address:				
City/State/Zip:				
Phone:				
E-mail:				
Circle Sweat Shirt Size:	M	L	XL	XXL

I confirm that the hooks, belts, and hand tools that I will provide for the rodeo will be in safe operating condition.

Signature: _____

Note: Entry form must be signed.

***Mail To: Jill Presto
Safety & Training Technician
ElectriCities of North Carolina, Inc.
P.O. Box 29513
Raleigh, NC 27626-0513**

**APPRENTICE ENTRY FORM
NCAMES ANNUAL LINEMAN'S RODEO**

Apprentices (please duplicate if necessary)

Name:				
Title:				
Utility/Company:				
Address:				
City/State/Zip:				
Phone:		Fax:		
E-mail:				
Circle Sweat Shirt Size	M	L	XL	XXL

I confirm that the hooks, belts, and hand tools that I will provide for the rodeo will be in safe operating condition.

Signature: _____ (Apprentice)

Note: Entry form must be signed.

THE FOLLOWING MUST BE COMPLETED AND SIGNED BY APPRENTICE'S SUPERVISOR:

I certify that the above listed contestant meets the criteria for apprentice.

Supervisor Signature:				
Title:				
Utility/Company:				
Phone:				
E-mail:				

***Mail To: Jill Presto
Safety & Training Technician
ElectriCities of North Carolina, Inc.
P.O. Box 29513
Raleigh, NC 27626-0513**

MUTUAL AID TEAM EVENT ENTRY FORM
NCAMES ANNUAL LINEMAN'S RODEO

MUTUAL AID TEAM EVENT
Name
Utility/Company:
Address:
City/State/Zip
Phone:
E-mail:
Signature:

Note: Entry form must be signed.

***Mail To: Jill Presto
Safety & Training Technician
ElectriCities of North Carolina, Inc.
P.O. Box 29513
Raleigh, NC 27626-0513**

THE FOLLOWING AGREEMENT MUST BE COMPLETED AND SIGNED BY CONTESTANT'S SUPERVISOR:

RELEASE AND WAIVER OF LIABILITY, ASSUMPTION OF RISK, AND INDEMNITY AGREEMENT

In consideration of NCAMES staging a Lineman's Rodeo at _____ (hereinafter "the Event"), or otherwise permitting me to attend such Event, I, on my own behalf and on behalf of my heirs, next of kin, representatives, administrators, and assigns, hereby agree as follows:

1. I HEREBY AGREE TO RELEASE, WAIVE, DISCHARGE AND COVENANT NOT TO SUE NCAMES, its officers, directors, managers, employees, shareholders, insurers, or any participant in the Event (hereinafter "Releases") FOR ANY AND ALL LIABILITY, INCLUDING BUT NOT LIMITED TO, PERSONAL INJURY, LOSS OR DAMAGE TO PROPERTY caused or alleged to be caused in whole or in part by the negligence or gross negligence of the Releases' or otherwise while I am participating in or attending the Event. I expressly acknowledge that injuries received may be compounded or increased by the negligent rescue operations or procedures of the Releases' and this Release and Waiver of Liability, Assumption of Risk, and Indemnity Agreement (the "Release") is expressly intended to include any such compounding or increasing of injury.
2. I understand that engaging in the Lineman's Rodeo activities constitutes my involvement in a dangerous activity with accompanying risk of personal injury or death, or loss or damage to personal property, and I hereby voluntarily assume all risks and accept personal responsibility for the damages and medical expenses following any injury, permanent disability, or death, or loss or damage to personal property caused by the negligence or gross negligence of the Releases'.
3. I hereby agree to indemnify and hold harmless the Releases' and each of them from any loss, liability, damage or cost they may incur due to my presence or participation in the event including, but not limited to, responding to or defending against any allegation, claim or cause of action brought in violation of this Release.

I HAVE READ THIS RELEASE AND WAIVER OF LIABILITY, ASSUMPTION OF RISK, AND INDEMNITY AGREEMENT, FULLY UNDERSTAND ITS TERMS, UNDERSTAND THAT I HAVE GIVEN UP SUBSTANTIAL RIGHTS BY SIGNING THE AGREEMENT FREELY AND VOLUNTARILY WITHOUT INDUCEMENT, ASSURANCES, OR GURANTEES BEING MADE TO ME AND INTEND MY SIGNATURE TO BE A COMPLETE AND UNCONDITIONAL RELEASE OF ALL LIABILITY TO THE GREATEST EXTENT ALLOWED BY LAW.

Signature: _____

Date: _____

Print Name: _____

Witness: _____

Date: _____